

# WEST WINDSOR – PLAINSBORO HIGH SCHOOL NORTH & SOUTH

## 2005



## PROFILE

**WEST WINDSOR - PLAINSBORO REGIONAL SCHOOL DISTRICT** has served the municipalities of West Windsor Township and Plainsboro Township since its formation in 1969. In fulfilling its mission since regionalization, the district has been successful in providing school facilities and an outstanding education for our ever-increasing student population. A diverse suburban community of approximately 42,000 residents, the district is located in central New Jersey, north of the state capital, Trenton, and east of Princeton. The two townships are conveniently located 50 miles south of New York City and 48 miles north of Philadelphia, allowing the communities to benefit from the opportunities available in these exciting cities. West Windsor and Plainsboro Townships are home to technology leaders such as the David Sarnoff Research Center, FMC Corporation, Plasma Physics Laboratory, and myriad companies located in the Forrestal and Carnegie Corporate Centers. The area has been recognized as one of the top suburban communities in the region.

### **SCHOOLS**

West Windsor - Plainsboro High School North and South reflect the lifestyle of a community that takes pride in its continuing tradition of academic and cultural achievement. The richness of their academic programs, alternative options, and extracurricular activities expands learning beyond classroom boundaries. Each high school provides an educational environment that motivates students to learn and requires them to exercise imagination and sensibility in solving problems. Approximately 2,900 students may choose from over 150 courses offered in a program of studies that reflects a demanding and challenging curriculum. Close partnerships have been developed with area businesses of Princeton and the Route 1 research corridor, Educational Testing Service, James Forrestal Research Campus of Princeton University, and Princeton University. The high schools offer state-of-the-art resources and technology that allow faculty to provide interdisciplinary instruction with maximum flexibility. West Windsor - Plainsboro High School North and South each offers teams in 25 sports plus cheerleading and sponsors various student publications, acclaimed performing groups in vocal and instrumental music, academic teams, and over 30 clubs/activities devoted to specialized interests. Approximately 10 percent of the senior class earned National Merit semifinalist or commended scholar status. Traditionally, the West Windsor - Plainsboro Regional School District has the largest number of National Merit semifinalists in New Jersey. Approximately 93 percent of our graduates continue their education with 85 percent going on to four-year colleges. West Windsor-Plainsboro Regional School District boasts two excellent high schools: West Windsor-Plainsboro HS North (311232) and West Windsor-Plainsboro HS South (311277). A second high school was built to reduce class sizes and to provide more opportunities for our students. This

profile contains the aggregate measures of both campuses, continuing to reflect why our high school community receives state and national recognition.

### **STAFF**

The academic and cultural resources of West Windsor and Plainsboro have attracted a dedicated and highly trained instructional staff that welcomes the challenges and excitement of a diverse student population. The high school values its 11 to 1 student to faculty ratio. About 65 percent of the 296 teachers hold advanced degrees (M.A. or Ph.D.). Additionally, many faculty members serve as educational consultants or teach part-time at local colleges and universities.

### **STUDENT BODY**

The population of West Windsor - Plainsboro High School North and South reflects the growing trend toward pluralism in American society. Students represent all major racial and cultural groups (55 percent White, 36 percent Asian, 5 percent African American, and 5 percent Hispanic). Our students speak 33 languages. The new students who enrolled in the high school for the 2004-2005 school term represent a multitude of countries and states. This diversity affords students excellent opportunities for intercultural understanding and provides them with a global view of world issues.

### **RECOGNITIONS**

West Windsor - Plainsboro High Schools have been accredited by the New Jersey Department of Education. It has been recognized as a "Blue Ribbon School" by the U. S. Department of Education and by various area publications as one of the premier high schools in the state. These recognitions have been earned through the commitment of staff and students to the quality of life and learning.

### **INTERSCHOLASTIC ATHLETICS**

Women's sports include: soccer, field hockey, cross-country, tennis, basketball, indoor track, swimming, track, lacrosse, softball, volleyball, golf, diving, cheerleading, and fencing.

Men's sports include: football, soccer, cross-country, wrestling, basketball, indoor track, ice hockey, swimming, baseball, track, lacrosse, tennis, volleyball, golf, diving, and fencing.

West Windsor - Plainsboro High School athletes earned 11 conference championships, 3 county championships, 3 sectional state championships, 1 state group championship, and 5 conference sportsmanship awards during the 2004-2005 school year.

## MINIMUM GRADUATION REQUIREMENTS

All West Windsor-Plainsboro High School students must successfully complete a minimum of 120 credits in course work that begins in Grade 9 and concludes in Grade 12. The course work must include the following:

1. Four years of Language Arts (9-12)
2. Three years of Mathematics
3. Two years of American Studies
4. One year of World History
5. Three years of Science
6. Two years of Visual, Performing and/or Practical Arts
7. Two years of World Languages
8. One year of Health & Physical Education for each year enrolled
9. One half year of career education (through infusion)

## GRADING SYSTEM/WEIGHTED AND UNWEIGHTED GRADE POINT AVERAGE (GPA) SCALE:

Both weighted and unweighted grade point averages (WGPA and GPAs) are calculated. WGPA is based on an open-ended scale beginning with 0.00 and having no ceiling. Only the final grade achieved in each course is used to compute GPA and WGPA. All graded (non-pass/fail) courses, with the exception of Physical Education, are used in the calculation of WGPA. Coursework completed outside the parameters of WWPBS academic day does not count towards WGPA or GPA except for courses taken at Princeton University. Each letter grade is assigned a numeric equivalent as indicated in the following table:

Grade	Weighted	Unweighted	Grading Scale
A	5	4	90-100
B	4	3	80-89
C	3	2	70-79
D	2	1	60-69
F	0	0	0-59

1. For each graded (non-pass/fail) course the student completes, with the exception of Physical Education for WGPA, multiply the numeric equivalent of the grade received times the number of credits earned to determine the number of quality points awarded.
2. Determine the sum of quality points earned for all courses for each year.
3. Divide the quality point total for one year by the total number of credits attempted for that year. This will yield the grade point average for that year. The same method is used for calculating WGPA and GPA. Weighted courses grade point equivalents increase 1.0 points.

## RANK IN CLASS:

The academic environment at West Windsor - Plainsboro High School North and South is very challenging. The majority of our students meet that challenge by earning exemplary grades. The comparisons among students inherent in rank-in-class calculations unnecessarily increase competition within the school; further, we believe that our students' levels of achievement are not equitably or fully communicated by this single figure transcript statistic. **West Windsor - Plainsboro High School North and South policy, therefore, precludes the reporting of rank-in-class.**

## CURRICULUM

The West Windsor-Plainsboro High Schools maintain a single curriculum, which is broad in scope and flexible in meeting the general and individual needs of students. The instructional program focuses on college preparation with honors and Advanced Placement courses offered in all major disciplines. Students who have exhausted course offerings within a discipline may work for credit at Princeton University. All honors, Advanced Placement and Princeton University courses receive weighted value in the calculation of the WGPA. WWPBS offers a challenging and rigorous academic curriculum at all levels. Therefore, the numerous AP courses in our program are typically available to juniors and seniors only. All weighted (honors/AP) courses are in **bold print**.

### Business/Computer Science

Accounting I, II, & III, Computer Applications, Digital Media, Graphic Computer Applications I & II, Integrated Computer Applications, Intro to Computer Programming I & II, **Artificial Intelligence & Robotics Hn**, **AP Computer Science A**, **AP Computer Science B**.

### English

Lang Arts I, II, **Lang Arts I, II Hn**, Lang Arts III/IV: Art of the Essay, Art of Poetry, Art of Short Story, Monsters in Lit, Passport to World Lit, Pol & Gov't in Lit, Rebellion & Conformity, Gender Roles in Lit, Shakespeare, Search for Self in Lit, **Lang Arts III/IV: Art of the Essay Hn**, **Monsters in Lit Hn**, **Passport to World Lit Hn**, **Pol & Gov't in Lit Hn**, **Rebellion & Conformity Hn**, **Gender Roles in Lit Hn**, **Shakespeare Hn**, **Search for Self Hn**, **AP Lang & Comp**, **AP Lit & Comp**, **Adv Journalism Hn**, **Adv Writing Hn**, Broadcast Writing, Adv Broadcast Writing, Writing, Journalism, Speech/Drama, Dramatic Arts, Adv Drama, Writing Lab, Reading, Reading SRA.

### Fine Arts

Art Foundation, Comp. Art & Design I & II, Drawing I & II, Painting I & II, Photography I & II, Sculpture, Ceramics, Printmaking, Book & Paper Arts, **AP Art History**, **AP Studio Art**.

### Life Skills

Child Growth & Development, Culinary Arts, International Foods, Creative Cooking & Catering, Fashion Strategies, Advanced Clothing Construction, Youth Teaching Youth, Consumer Economics.

### Mathematics

Math Lab 9-10, 11-12, Algebra I Part 1, Algebra I Part 2, Algebra I, Basic Geometry, Geometry, **Geometry Hn**, **Geometry Hn/Acc**, Algebra & Trigonometry, Algebra II, Adv Algebra II, **Adv Algebra II Hn**, **Algebra II w/Trigonometry Hn/Acc**, **Math Analysis Hn/Acc**, Statistics, Precalculus, **Precalculus Hn**, **Precalculus Hn/Acc**, **Calculus Hn**, **AP Calculus AB**, **AP Calculus BC**, **AP Statistics**, **Multivariable Calculus Hn/Acc**.

### Music

Chorale, Concert Choir, Concert Band, Music Theory I & II, Symphony Orchestra, String Ensemble, Advanced Concert Band.

### Physical Education

Physical Education 9, 10, 11, 12(not included in WGPA), Health Education 9, 11, 12, Driver's Education 10, Fundamentals of Sports Medicine.

### Science

Biology, **Biology Hn**, Chemistry, **Chemistry Hn**, Oceanography & Meteorology, Physics, **Modern Physics Hn**, Human Anatomy & Physiology, Environmental Science, Forensic Sciences, Descriptive Astronomy, Genetics, **AP Biology**, **AP Chemistry**, **Adv. Topics in Physics Hn**.

### Social Studies

World History, American Studies I & II, **American Studies I & II Hn**, Int'l Business & Cultures, Human Behavior, Economics/Soc Problems in Am Society, Political/Legal Experience (IPLE), Multicultural Studies, **AP US History**, **AP European History**, **AP American Government**.

### Technical School Programs

Mercer County Technical School (VoTech AM, VoTech PM, ), School of Performing Arts.

### World Languages

Spanish for Heritage Speakers, Intro. to Spanish Comm. & Culture, Spanish I, II, III, IV & V, Acc Spanish III, **Spanish IV Hn**, **ACC Spanish IV Hn**, **Spanish V Hn**, **AP Spanish**, French I, II, III, IV, & V, **French IV & V Hn**, **AP French**, German I, II & III, **German IV & V Hn**, **AP German**, Latin I, II & III, **Latin IV & V Hn**, Chinese I, II & III, **Chinese IV & V Hn**.

### Additional Studies

**Advanced Study at Princeton University**, Independent Study, Senior Option, Dual Credit Tech Prep at MCCC.

### The following Mathematics Courses are part of the Gifted and Talented Program:

#### Geometry Hn/Acc

#### Algebra II w/Trigonometry Hn/Acc

#### Math Analysis Hn/Acc

#### Precalculus Hns/Acc

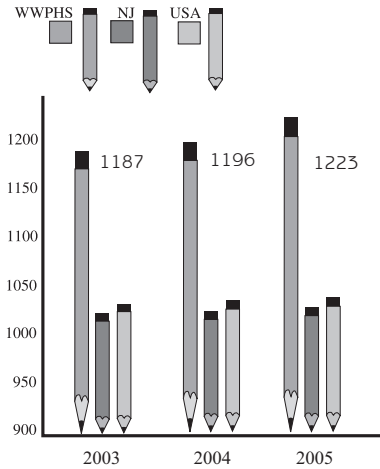
#### AP Calculus BC

#### Multivariable Calculus Hns/Acc

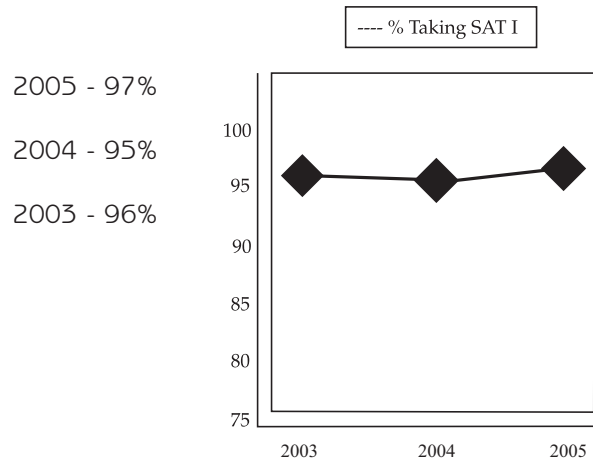
### SAT REASONING TEST MEAN SCORES

Verbal Math

<b>WWPHS</b>		
2005	596	627
<b>New Jersey</b>		
2005	503	517
<b>USA</b>		
2005	508	520
<b>WWPHS</b>		
2004	583	613
<b>New Jersey</b>		
2004	501	514
<b>USA</b>		
2004	508	518
<b>WWPHS</b>		
2003	576	611
<b>New Jersey</b>		
2003	501	515
<b>USA</b>		
2003	507	519



### Percentage of WWPHS Graduates Taking the SAT Reasoning Test:



### 2004 - 2005 PSAT Comparisons (Mean Scores)

WWPHS N & S			NJ			USA		
CR	M	W	CR	M	W	CR	M	W
52.4	57.0	55.1	46.5	48.7	50.1	46.9	48.8	50.5

### SAT Subject Tests Mean Scores Class of 2005

	USA	WWPHS
English Writing	605	664
English Literature	589	660
Mathematics IC	586	644
Mathematics Level IIC	670	722
United States History	599	650
Chemistry	628	707
Spanish	636	610
Biology E	595	622
Biology M	627	630
Physics	652	686
Chinese Listening	758	791
Korean Listening	752	796
French	620	638
World History	590	592

**NJDOE Scholars**  
Class of 2005  
Bloustein Distinguished Scholars - 69

**National Merit Scholars**  
Class of 2006  
Semifinalists - 20

**Class of 2005**  
Semifinalists - 30  
Letters of Commendation - 66  
Hispanic Scholars - 1

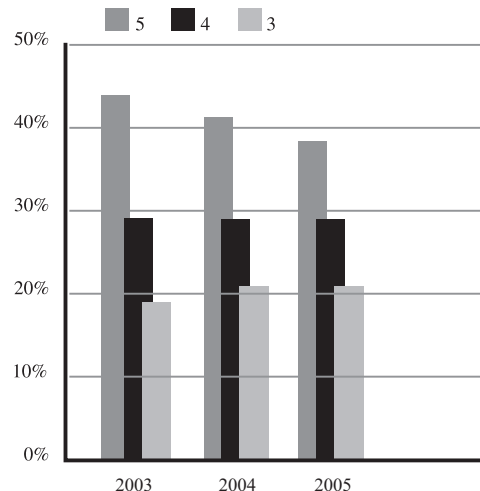
**A.P. Scholars**  
**2004**  
Scholars - 61  
Scholars with Honors - 39  
Scholars with Distinction - 55  
National Scholars - 13

### ADVANCED PLACEMENT RESULTS

2005 - 88% of the students had grades of 3 or higher.  
592 students wrote 1212 exams.  
38% - 5      28% - 4      21% - 3

2004 - 90% of the students had grades of 3 or higher.  
488 students wrote 1038 exams.  
41% - 5      28% - 4      21% - 3

2003 - 92% of the students had grades of 3 or higher.  
425 students wrote 923 exams.  
44% - 5      29% - 4      19% - 3

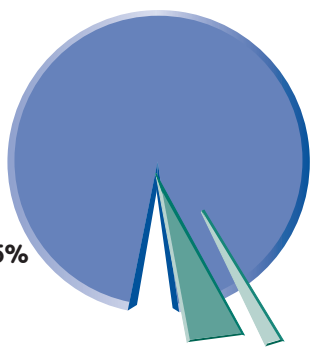


**GRADUATE PLACEMENT**

**POSTGRADUATE PLANS**

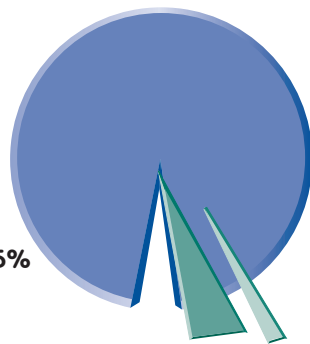
**CLASS OF 2005**

**4 - Year College: 85%**  
**2 - Year College: 8%**  
**Total: 93%**  
**Work/Military/Undecided: 6%**



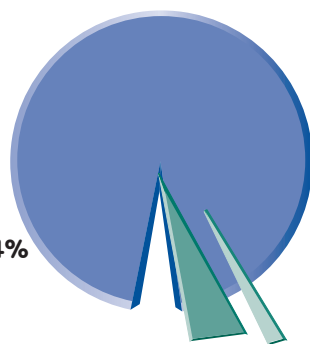
**CLASS OF 2004**

**4 - Year College: 86%**  
**2 - Year College: 9%**  
**Total: 95%**  
**Work/Military/Undecided: 5%**



**CLASS OF 2003**

**4 - Year College: 87%**  
**2 - Year College: 9%**  
**Total: 96%**  
**Work/Military/Undecided: 4%**



Members of the WWPHS classes of '03, '04, and '05 are in attendance at the following institutions. Only those schools with 3 or more WWPHS graduates in attendance are listed.

Rutgers U	244	Bryn Mawr C	5
NYU	34	Champlain C	5
Penn State U	32	Fashion Institute of Tech	5
Rider U	32	George Mason U	5
U of Maryland	31	Miami U	5
Cornell U	29	Stanford U	5
Drexel U	29	Tulane U	5
Carnegie Mellon U	26	U of Miami	5
George Washington U	25	U of Pittsburgh	5
Syracuse U	25	Virginia Polytech	5
U of Delaware	25	Washington & Lee U	5
The College of NJ	24	Art inst. of Philadelphia	4
U of Michigan	21	Bentley C	4
U of Pennsylvania	21	Cabrini C	4
Boston U	19	Elizabethtown C	4
Lehigh U	15	Elon U	4
NJ Inst of Tech	15	Fairleigh Dickinson U	4
Princeton U	15	Fordham U	4
U of Illinois	15	La Salle U	4
Villanova U	15	Monmouth U	4
Georgetown U	14	Oberlin C	4
American U	13	Ohio State U	4
Johns Hopkins U	13	Pace U	4
Johnson & Wales U	13	RPI	4
Temple U	13	Rochester Inst. of Tech	4
James Madison U	12	Salisbury U	4
Rowan U	12	St. John's U	4
Montclair State U	11	Stevens Inst. of Tech	4
Muhlenberg C	11	Susquehanna U	4
U of Rochester	11	U of Notre Dame	4
Dartmouth C	10	U of Scranton	4
Kean U	10	U of Southern California	4
Northeastern U	10	U of the Arts	4
Boston C	9	U of the Sciences in Phil.	4
Indiana U	9	U of Vermont	4
McGill U	9	U of Wisconsin	4
Purdue U	9	Vassar C	4
Towson U	9	Wake Forest U	4
U of Rhode Island	9	Wesleyan U	4
Yale U	9	Williams C	4
Dickinson C	8	Bates C	3
Hofstra U	8	Berklee C of Music	3
Lafayette C	8	Bucknell U	3
Northwestern U	8	Clemson U	3
Saint Joseph's U	8	C of William & Mary	3
U of Chicago	8	East Stroudsburg U	3
U of Hartford	8	Emory U	3
Case Western Reserve U	7	Fairfield U	3
Columbia U	7	Franklin & Marshall C	3
Duke U	7	Georgia Inst. of Tech	3
East Carolina U	7	Haveford C	3
Harvard U	7	High Point U	3
Loyola College in MD	7	Howard U	3
Quinnipiac U	7	Ithaca C	3
Richard Stockton C	7	Kutztown U	3
Savannah College of Art & Design	7	Michigan State U	3
Seton Hall U	7	Neumann C	3
U of California	7	Philadelphia U	3
U of Connecticut	7	Ramapo C	3
U of Massachusetts	7	Rice U	3
West Virginia U	7	Stonehill C	3
William Paterson U	7	Swarthmore C	3
Catholic U of America	6	US Military Academy	3
Gettysburg C	6	U of Florida	3
Tufts U	6	U of Richmond	3
U of North Carolina	6	U of Tampa	3
Washington U in St. Louis	6	Vanderbilt U	3
Brown U	5	Wellesley C	3

**WEST WINDSOR - PLAINSBORO HIGH SCHOOLS**

District Web Site: <http://www.ww-p.org>

South: 346 Clarksville Road • PO Box 535 • Princeton Junction • NJ 08550-0535 (609) 716-5050  
 North: 90 Grovers Mill Road • PO Box 50 • Plainsboro • NJ 08536 (609) 716-5100

**CEEB CODE: 311277-South 311232-North**

- Superintendent:** Dr. Robert L. Loretan
- Principals:** Charles Rudnick (South) • Michael Zapicchi (North)
- Assistant Principals:** Robert Banks • Melissa Betron • Douglas Eadie • Dennis Lepold
- Lead Counselors:** Leslie Fisher (South) • Lee Riley (North)
- Guidance Staff:** Michael Alberto • Eric Becker • Theresa Bonanno • Fred Dearden • Nancy Himsel • Debra Levinson • Wendy Michalewsky • Linda Morrell • Brooke Parrott • Joyce Ragucci • Bari Sholomon • Cheryl Smith • Christine Tomalin • Jo-Anne Walker • Michelle Walsh
- Child Study Team:** Lauren Fulmore • Mary Jane Gosselin • Diane Lantz-Hecker • Alexandra Lawrence • Sandra Middlemiss • Jeanne Nelson • Arlene Roman • Toni Watten
- Supervisors:** Ann Breitman, Language Arts • Martin Flynn, Athletics • Jeanne Maskell, Mathematics • John McNamara, Social Studies • Carol Meulener, World Languages • Robert Richard, Science • Kathy Stewart, Special Services
- Director of Guidance:** Nancy Icenhower ([nancy.icenhower@ww-p.org](mailto:nancy.icenhower@ww-p.org))